

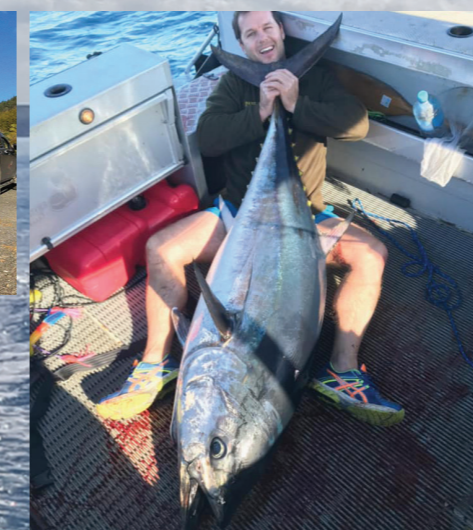
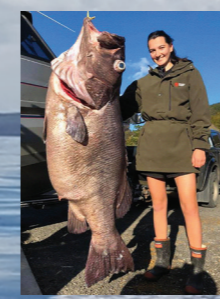


THE
ULTIMATE
OUTBOARD MOTOR



40 - 100HP FOUR STROKE

OUR PEOPLE OUR PASSION.



Based in Whanganui, Suzuki New Zealand has a small but dedicated team of enthusiastic staff who are passionate about the outdoor lifestyle NZ has on offer. Whether this activity is fishing, water sports or just recreational boating it's a sure bet that most weekends you'll find us out on the water or in it. We're proud of the fact that we don't just sell outboard motors, we own them, use them and because of this we better understand what Kiwis expect from our range of ultimate outboard motors. We promise you a 100% commitment to maximising your on water enjoyment as a first priority, we know the standards you expect and will go that extra nautical mile to meet them.

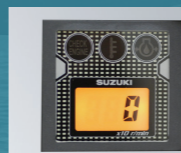
FUEL-INJECTED, ECONOMICAL, READY TO POWER YOUR ADVENTURES.

DF40A / DF50A / DF60A

MULTI-FUNCTION TILLER HANDLE

Suzuki's ergonomically designed tiller handle provides comfortable operation of the outboard whether operated with the left or right hand.

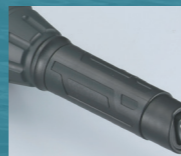
MAIN FEATURES



Tachometer with warning indicators



Three-position angle adjustable bracket



Power trim & tilt switch and throttle grip friction adjuster



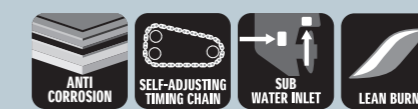
Troll mode switch activates SUZUKI Troll Mode System and controls RPM from idling engine speed up to 1200rpm at every 50rpm



DF115A/100A
DF100B/90A/80A/70A
DF60AV DF60A/50A/40A

SPECIFICATIONS

DURABILITY & RELIABILITY



ECONOMY



OPTIONAL*1

PERFORMANCE



OPTIONAL*1

EASE & COMFORT

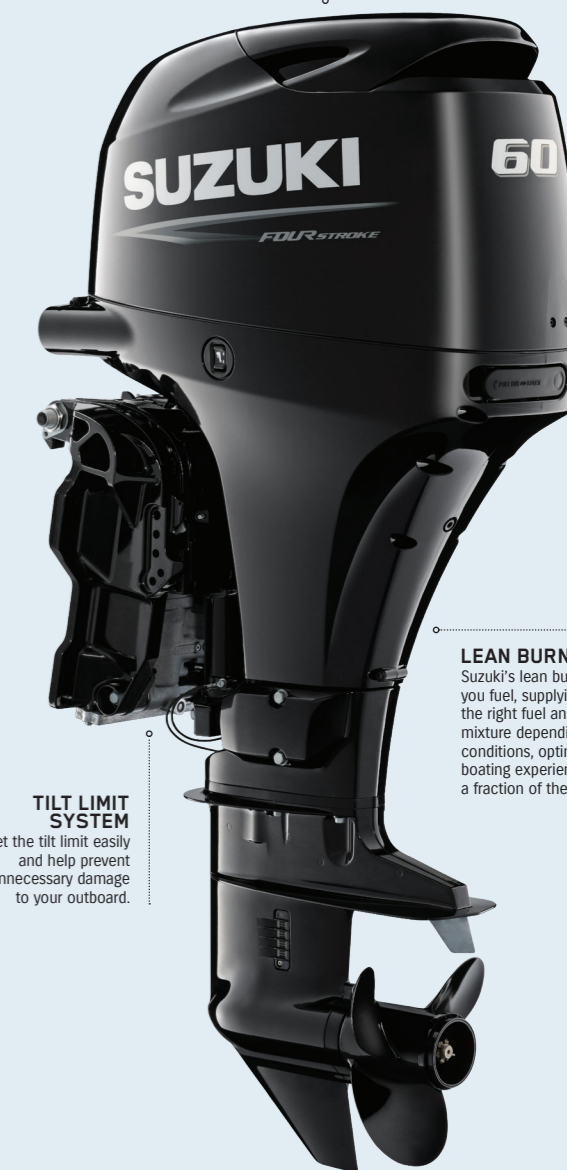


OPTIONAL*2

	60A	50A	40A
RECOMMENDED TRANSOM HEIGHT MM	S: 381 L: 508 X: 635	S: 381 L: 508	S: 381 L: 508
RECOMMENDED TRANSOM HEIGHT INCH	S: 15 L: 20 X: 25	S: 15 L: 20	S: 15 L: 20
STARTING SYSTEM	ELECTRIC		
WEIGHT KG*3	S: 102 L: 104	S: 102 L: 104	S: 102 L: 104
CYLINDERS	IN-LINE 3		
ENGINE TYPE	DOHC 12-VALVE		
FUEL DELIVERY SYSTEM	ELECTRONIC FUEL INJECTION		
PISTON DISPLACEMENT CM ³	941		
MAXIMUM OUTPUT KW	44.1	36.8	29.4
FULL THROTTLE OPERATING RANGE RPM	5,300 -6,300	5,300 -6,300	5,000 -6,000
CONTROLS	REMOTE (MECHANICAL)		

*1 Available with SMD or SMG
*2 Available with SMD, SMG, or Troll Mode Switch Panel
*3 Dry weight not including propeller and engine oil

ENGINEERED PERFORMANCE
Whisper quiet cam chain driven four-stroke technology, with double overhead camshaft and four valves per cylinder. The perfect combination of performance and fuel economy.



LEAN BURN
Suzuki's lean burn saves you fuel, supplying just the right fuel and air mixture depending on the conditions, optimising your boating experience for just a fraction of the price.

TILT LIMIT SYSTEM
Set the tilt limit easily and help prevent unnecessary damage to your outboard.

TAKING PERFORMANCE SERIOUSLY WITHOUT MAKING A BIG DEAL ABOUT IT.

DF70A / DF75A /
DF80A / DF90A / DF100B



DF100B

For people who use light weight boats and need quick acceleration (e.g. compact or inflatable boat)

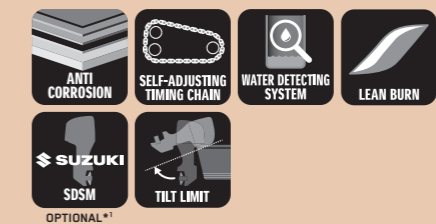
2-STAGE GEAR REDUCTION

This system which incorporates the Offset Driveshaft features a first stage reduction between the crankshaft and drive shaft, and a second stage reduction inside the gear case. This design makes a larger gear ratio possible, allowing it to turn a large diameter propeller.

- High propulsive efficiency with large diameter propeller.
- Powerful navigation, maintaining propeller rotation even with a larger load.
- Tremendous power to turn large diameter propellers, offering quick acceleration.

MECHANICAL SPECIFICATIONS

DURABILITY & RELIABILITY



ECONOMY

PERFORMANCE



EASE & COMFORT

	100B	90A	80A	75A/70A
RECOMMENDED TRANSOM HEIGHT MM	L: 508 X: 635		L: 508 X: 635	
RECOMMENDED TRANSOM HEIGHT INCH	L: 20 X: 25		L: 20 X: 25	
STARTING SYSTEM	Electric			
WEIGHT KG*3	L: 157 X: 161		L: 156 X: 160	
CYLINDERS	IN-LINE 4			
ENGINE TYPE	DOHC 16-VALVE			
FUEL DELIVERY SYSTEM	ELECTRONIC FUEL INJECTION			
PISTON DISPLACEMENT CM³	1,502			
MAXIMUM OUTPUT KW	73.6	66.2	58.8	51.5
FULL THROTTLE OPERATING RANGE RPM	5,700-6,300	5,300-6,300	5,000-6,000	5,000-6,000
CONTROL	REMOTE (MECHANICAL)			

*1 Available with SMD or SMG
*2 Available with SMD, SMG, or Troll Mode Switch Panel
*3 Dry weight not including propeller and engine oil

ENGINEERED PERFORMANCE

Whisper quiet cam chain driven four-stroke technology, with double overhead camshaft and four valves per cylinder. The perfect combination of performance and fuel economy.



LEAN BURN

Suzuki's lean burn saves you fuel, supplying just the right fuel and air mixture depending on the conditions, optimising your boating experience for just a fraction of the price.

OFFSET DRIVE SHAFT

Unique to Suzuki Marine is our offset drive shaft which assists with improving fuel economy and acceleration, better weight distribution and 2.59 gear ratio.

DURABILITY & RELIABILITY



ALL MODELS

WATER DETECTING SYSTEM
It helps to protect the engine from water in the fuel using a water detecting fuel filter to alert the driver with both visual and audio warnings when water is present in the fuel.

ADVANTAGE:

- Prevents water in fuel, which can be the cause of issues like poor combustion, lower power output and corrosion.



ALL MODELS

SELF-ADJUSTING TIMING CHAIN
The timing chain runs in an oil-bath so it never needs lubricating, and is equipped with an automatic hydraulic tensioner so it remains properly adjusted at all times.

ADVANTAGE:

- More durability compared to belt types of same class.
- Maintenance-free engine output.



ALL MODELS

TILT LIMIT SYSTEM
Tilt Limit System prevents the outboard from tilting beyond a selected angle.

ADVANTAGE:

- Prevents damage to the boat or outboard due to excessive outboard tilting.



OPTIONAL

SUB WATER INLET
Two water inlets in different directions ensure that the engine does not overheat due to the clogging of algae.



ALL MODELS

SDSM
This feature* enables you to scan the QR code containing the engine information displayed on the Multi-Function Gauge with your smart phone and send the information via email.

ADVANTAGE:

- The SDSM App lets you send your authorised Suzuki dealer all the technical information they need to service and maintain your outboard motor instantly and easily.

* Suzuki Multi-function Gauge or Suzuki Multi-function Display and a smartphone running Android or iOS is required.

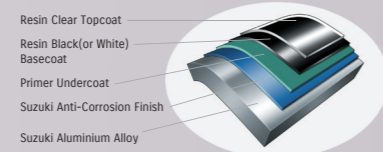


ALL MODELS

SUZUKI ANTI-CORROSION FINISH
Special protection is applied to the aluminium surface using high strength bonding to protect the aluminium made exterior parts.

ADVANTAGE:

- Protection against corrosion helps increase the overall outboard durability.



PERFORMANCE



ALL MODELS

2-STAGE GEAR REDUCTION
This system which incorporates the Offset Driveshaft features a first stage reduction between the crankshaft and drive shaft, and a second stage reduction inside the gear case. This design makes a larger gear ratio possible, allowing it to turn a large diameter propeller.

ADVANTAGE:

- Increased power to turn large diameter propellers, offering quick acceleration.
- High propulsive efficiency with large diameter propeller.
- Powerful navigation, maintaining propeller rotation even with a larger load.



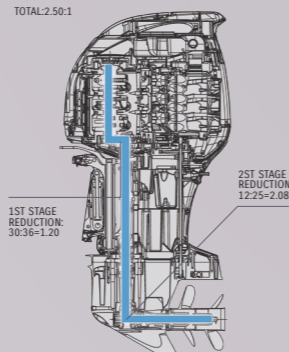
ALL MODELS

OFFSET DRIVESHAFT
The engine powerhead is positioned closer to the front, moving the outboard's centre of gravity forward.

ADVANTAGE:

- Less vibration
- More compact
- Stable steering performance

70/80/90/100
TOTAL 2.50:1



EASE & COMFORT



ALL MODELS

SUZUKI TROLL MODE SYSTEM* (Optional for Remote Control models)
This system helps the boat running at a certain speed range in low revs.

ADVANTAGE:

- Boat can keep running at a certain speed range in low revs without having to operate the throttle on the boat.
 - Gives you highly precise control at low revs.
- * Available with SMD, SMG, or Troll Mode Switch Panel



ALL MODELS

SUZUKI EASY START SYSTEM
Simply turn the key and release, and the starter stays engaged until the engine starts. This system offers a smoother start of the engine.

ECOLOGY & ECONOMY



ALL MODELS

LEAN BURN CONTROL SYSTEM
The Lean Burn Control System supplies the appropriate amount of fuel and air mixture depending on the navigation conditions.

ADVANTAGE:

- Significant improvement in fuel economy in all speed ranges especially at cruising speed.
- Fuel is saved and gasoline costs are cut thanks to improved fuel economy.



ALL MODELS

SUZUKI CLEAN OCEAN PROJECT
Suzuki Clean Ocean Project was created to demonstrate Suzuki's commitment towards reducing marine plastic waste.

GENUINE PARTS

ECSTAR IS A GLOBAL BRAND NAME OF SUZUKI GENUINE OIL & CHEMICALS



V7000 10W-40 SEMI SYNTHETIC

THE ULTIMATE FORMULATION

Suzuki Approved Genuine Engine Oils have all been rigorously tested and certified by Suzuki engineers. So you can be confident that they'll help keep your Suzuki outboard in perfect condition, giving you maximum performance and reliability over its lifetime.

REPLACEMENT GUIDELINE

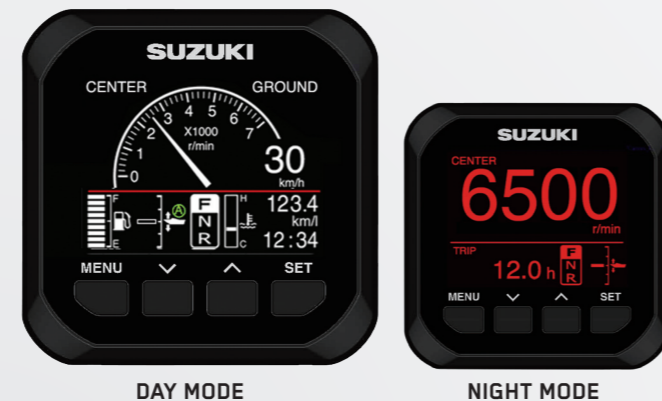
(ENGINE OIL)

INTERVAL	20 HOURS OR 1 MONTH*
	100 HOURS OR 1 YEAR*

*which ever comes first

This guideline may vary by outboard motor model, condition of use, region, etc. Please refer to the owner's manual or ask an authorised Suzuki dealer for more information.

Availability may differ in some regions. Please contact your Suzuki local dealer.



SMG4

SUZUKI MULTI-FUNCTION GAUGE ALL MODELS

Offering a genuine colour display, Suzuki's Multi-Function Gauge provides all the performance information you need in one easy to read gauge.

Individual elements can also be emphasised to further enhance user friendliness, functionality, and reliability.

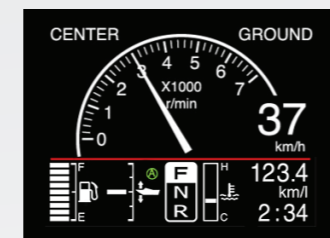
SPECIFICATIONS

- 3.5 Colour Display
- Size: 105mm(W)x105mm(H) x16mm(D)
- Easy installation and setup
- NMEA2000 output
- Applicable models: DF9.9B - DF350A

FEATURES

- Can be operated with both digital and analog readout
- Incorporates day and night modes
- Displays the QR code for the Suzuki Diagnostic System

ANALOG TACHO & SPEED MODE



DIGITAL TACHO MODE



MECHANICAL CONTROLS

To make boating even easier and reliable for you, we've developed a range of robust, waterproof, easy to use switch panels for your remote control boxes. Please ask your local Authorised Suzuki Dealer for more details.

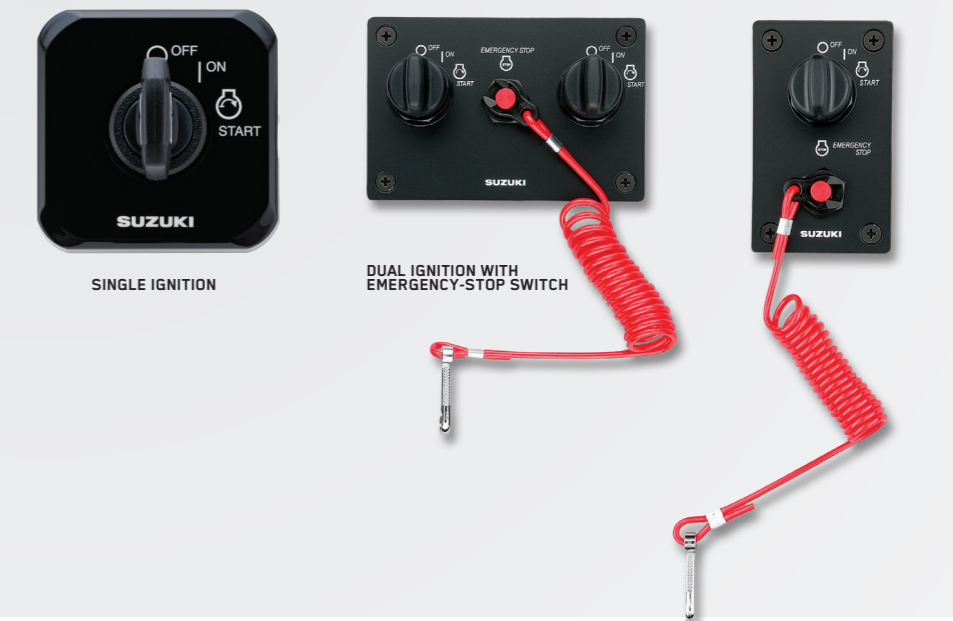


For reliable, relaxing boating, you need controls you can count on, whatever the conditions. So, through clever engineering and design, we've made our Flush-Mount and Side-Mount Remote Control Boxes as simple and robust as possible. That way, you can be confident you've got all the functions and control you need, and that they'll keep working flawlessly for years to come.

EMERGENCY SWITCH PANEL



IGNITION SWITCH PANELS



CONCEALED SIDE MOUNT CONTROL

- Flush mount maximises personal space
- Smooth operation

THE
ULTIMATE
OUTBOARD MOTOR

As the world's ULTIMATE OUTBOARD MOTOR brand, Suzuki always remains focused on providing the ultimate marine experience, which requires a healthy and clean marine environment. Since 2011, we have been voluntarily conducting the "Clean-up the World Campaign" every year to contribute to a better marine environment and more than 8,000 people have participated. In Japan, the campaign has been officially recognised by the Ministry of the Environment in the "Plastic Smart Campaign".

To continue to make our utmost effort for environmental protection, it is now time for us to review how we have been contributing to the environment and society and newly determine our direction. As well as continuing our worldwide clean-up campaign, we have committed to take responsible actions against plastic waste problems. We have developed the Suzuki Clean Ocean Project, to demonstrate our commitment.

OUR COMMITMENT

- Continue our actions to clean the marine environment all over the world
- Reduce plastic used in the packaging of our products
- Reduce marine micro-plastic waste

We believe the actions Team Suzuki takes around the world will be one positive step forward to a cleaner marine environment.

MARINE.SUZUKI.CO.NZ

