



**SUZUKI**  
**MARINE**

THE  
**ULTIMATE**  
OUTBOARD MOTOR

GENUINE PARTS & ACCESSORIES

THE ULTIMATE  
EXPERIENCE

OUR BACKYARD

# OUR PEOPLE, OUR PASSION.





Based in Whanganui, Suzuki New Zealand has a small but dedicated team of enthusiastic staff who are passionate about the outdoor lifestyle NZ has on offer. Whether this activity is fishing, water sports or just recreational boating it's a sure bet that most weekends you'll find us out on the water or in it. We're proud of the fact that we don't just sell outboard motors, we own them, use them and because of this we better understand what Kiwis expect from our range of ultimate outboard motors. We promise you a 100% commitment to maximising your on water enjoyment as a first priority, we know the standards you expect and will go that extra nautical mile to meet them.

## MECHANICAL REMOTE CONTROL

For reliable, relaxing boating, you need controls you can count on, whatever the conditions. So, through clever engineering and design, we've made our Binnacle Mount, Flush Mount and Side Mount Remote Control Boxes as simple and robust as possible. That way, you can be confident you've got all the functions and control you need, and that they'll keep working flawlessly for years to come.



BINNACLE MOUNT  
REMOTE CONTROL BOX



BINNACLE MOUNT  
REMOTE CONTROL BOX  
DUAL ENGINE



### FLUSH MOUNT REMOTE CONTROL

- Flush mount maximises personal space
- Smooth operation



SIDE MOUNT  
REMOTE CONTROL BOX



BINACLE MOUNT  
REMOTE CONTROL BOX  
FOR DUAL/TRIPLE/  
QUAD ENGINE



FLUSH MOUNT  
REMOTE CONTROL BOX  
FOR SINGLE ENGINE



BINACLE-MOUNT  
REMOTE CONTROL BOX  
FOR SINGLE ENGINE

#### MAIN FEATURES

- Suzuki Precision Control offers smooth and positive gear operation.
- Smooth power transitions when power is required.
- Combined with Suzuki's Lean Burn Control system, it delivers remarkable fuel economy over a wide operating range.

# SUZUKI PRECISION CONTROL (S.P.C)

Get the ultimate boating experience with the all new Suzuki Precision Control for Drive-by-Wire system. Controls up to 6 engines, features sleek new designs and more for better user convenience and smooth operation.

DF350A/325A/300B DF300AP/250AP  
DF200AP/175AP/150AP DF140BG/115BG

Drive By Wire (Suzuki Precision Control: S.P.C) is a technologically advanced computer-based control system with electronic wiring that eliminates the source of friction and resistance. While you enjoy smooth throttle and shift operation, the system's computer is processing and transmitting commands in real-time to actuators at the engine that deliver precise throttle controls with smoother, decisive shifting. The system can be configured with single, twin, triple, or quad installations, and for dual stations.

Suzuki Precision Control also features built-in systems that help guard the engine and drive against damage, so you can further experience the better boating life.



THE ULTIMATE  
EXPERIENCE

SWITCH PANELS

# ROBUST. WATER- PROOF. EASY TO USE.

To make boating even easier and reliable for you, we've developed a range of robust, waterproof, easy to use switch panels for your remote control boxes. Please ask your local Authorised Suzuki Dealer for more details.

## MECHANICAL SWITCH PANELS REGULAR KEY START

MAIN SWITCH PANEL



EMERGENCY  
SWITCH PANEL



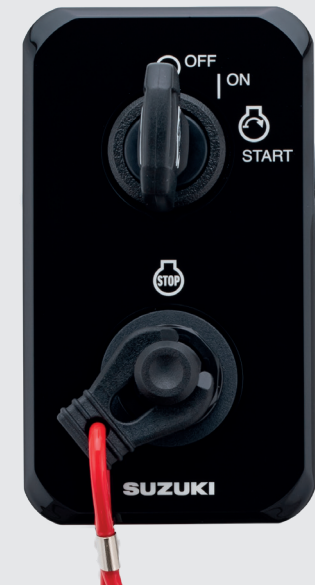
MAIN SWITCH PANEL HORIZONTAL



MAIN SWITCH DUAL PANEL HORIZONTAL



MAIN SWITCH PANEL  
VERTICAL



## CONTROL PANELS

### TROLL MODE SWITCH PANEL

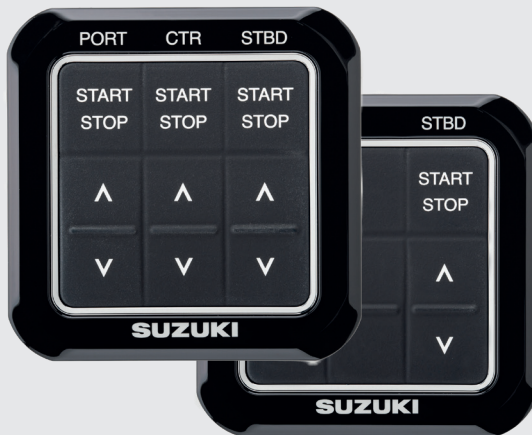


Available as an option on all remote control models from DF40A\* upwards, this easy-to-use system lets you adjust your engine speed in 50rpm increments for precision control at low revs. It has its own tachometer and control switch, and works alongside our Multi-Function and analogue gauges.

\*Not available for DF250/225/200TX.

### CONTROL PANELS

Required for Drive-By-Wire (SPC) engines.



### MAIN SWITCH PANEL VERTICAL



### MAIN SWITCH PANEL



### MAIN SWITCH PANEL HORIZONTAL



### EMERGENCY SWITCH PANEL



# KEYLESS START SYSTEM

Protect your boat and engine with Suzuki's new Keyless Start System. All you need is to grab your key fob and go!

The system has one push Start/Stop for easy engine start, and also an immobilizer function to keep your boat safe from theft.



## MULTI-FUNCTION GAUGE



### SUZUKI MULTI FUNCTION GAUGE ALL MODELS

Offering a genuine colour display, Suzuki's Multi-Function Gauge provides all the performance information you need in one easy to read gauge. Individual elements can also be emphasized to further enhance user friendliness, functionality, and reliability.

### SPECIFICATIONS

- 3.5 Colour Display
- Size: 105mm(W)x105mm(H) x16mm(D)
- Easy installation and setup
- NMEA2000 output
- Applicable models: DF9.9B - DF350A

### FEATURES

- Can be operated with both digital and analogue readout
- Incorporates day and night modes
- Displays the QR code for the Suzuki Diagnostic System.



### MULTILINGUAL MENU

SMG4 is available in 13 languages: English, French, Italian, German, Spanish, Swedish, Norwegian, Finnish, Dutch, Portuguese, Danish, Russian, Japanese.



### AUTOMATIC TRIM

- Automatically adjusts trim angle with OBM RPM.



### TROLL MODE

- Allows you to control your troll mode from the SMG4.

This function is available from year 2019 models. It can only be used by models which are adapted to troll mode.

## ANALOGUE GAUGE



### SPEEDOMETER



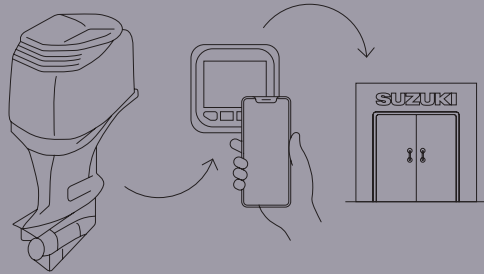
### FUEL GAUGE





# SUZUKI DIAGNOSTIC SYSTEM MOBILE PLUS

DF9.9B AND UP



## SIMPLE AND EASY

Read QR code containing engine information and send it by e-mail. This is a service tool that anyone can use.

## HOW TO USE

1. The outboard sends engine data and converts it into a QR code displayed on the Suzuki Multi-Function Gauge or Suzuki Multi-Function Display.
2. With the SUZUKI DIAGNOSTIC SYSTEM MOBILE PLUS application, you can scan the QR code on the Suzuki Multi-Function Gauge or Suzuki Multi-Function Display with your phone. The engine data will be stored on your smart phone.
3. You can then send the engine data via email to your Suzuki Dealer.

## AVAILABLE ON SELECTED MODELS

The Suzuki Multi-Function Gauge and Suzuki Multi-Function Display can use the app for free. In order to use it, a smartphone running Android or iOS is required.

## ADVANTAGES TO CUSTOMERS

- This app can show you information like cruising hours at each rpm and is useful when reviewing your cruising journey.
- Enables you to easily provide necessary engine information to the service personnel when your outboard needs maintenance.
- Possible to make a plan for boat trip along with checking the condition in advance.
- Check up on the boat & engines before the departure based on the engine data & checklist.

## ADVANTAGES TO DEALERS AND SERVICE PERSONNEL

- Enables you to obtain engine information more easily. No longer necessary to remove the engine cover and connect a personal computer.
- If any malfunction should occur in a customer's outboard, you can check the accurate engine information sent by the customer before going to the site.

## SUZUKI MULTI-FUNCTION DISPLAY

THE ULTIMATE EXPERIENCE

# MULTI-FUNCTION DISPLAY

SMD16



Suzuki Engine Interface Advanced Fish Finder\* C-Map Chart

\*Requires FURUNO transducer to utilize this feature.

## SUZUKI MULTI-FUNCTION DISPLAY (SMD) DF9.9B AND UP

Suzuki multi-function display is available in three screen sizes: 16 inch, 12 inch, 9 inch.

## KEY FEATURES

- Intuitive, easy, smooth operation with an entire total touch screen interface. Total control at your fingertips.
- All latest and unique technologies such as TruEcho Chirp™, Accu-Fish™, RezBoost™ combined in one display provide you the most exciting fishing experience.
- Bonded all-glass LCD, sunlight viewable screen with impressive brightness, and a luxurious look.
- Ease of operation with all Suzuki engine information integrated on one display.

## NEW WIRELESS SOLUTION

### MIRROR CONTROL APP 2 WAY COMMUNICATION. DF9.9B AND UP.

Combination with iOS/Android device increases the controllable station via Wireless LAN. The following App supports the mirror control of SMD9 over an iOS/Android devices



App: Mirror Control (free of charge). Seller: AvMap Sri. For iOS (App Store): <https://apps.apple.com/nz/app/mirror-control/id940193674>. For Android (Google Play): [https://play.google.com/store/apps/details?id=mirrorControl.impl&hl=en\\_US](https://play.google.com/store/apps/details?id=mirrorControl.impl&hl=en_US).

THE ULTIMATE EXPERIENCE

## GENUINE PARTS

ECSTAR IS A GLOBAL BRAND NAME OF SUZUKI GENUINE OIL & CHEMICALS

# ECSTAR

GENUINE OIL & CHEMICAL



V7000 10W-40 SEMI SYNTHETIC

### THE ULTIMATE FORMULATION

Suzuki Approved Genuine Engine Oils have all been rigorously tested and certified by Suzuki engineers. So you can be confident that they'll help keep your Suzuki outboard in perfect condition, giving you maximum performance and reliability over its lifetime.

### REPLACEMENT GUIDELINE (ENGINE OIL)

INTERVAL	20 HOURS OR 1 MONTH*
	100 HOURS OR 1 YEAR*

\*which ever comes first

This guideline may vary by outboard motor model, condition of use, region, etc. Please refer to the owner's manual or ask an authorised Suzuki dealer for more information.

Availability may differ in some regions. Please contact your Suzuki local dealer.

## GENUINE PARTS

### FUEL TANK & CONNECTORS DF6A AND UP

The genuine fuel tank is available in 12L and 25L.



### WATER SEPARATOR / FUEL FILTER DF5A AND UP



### WATER SEPARATOR / FUEL FILTER ELEMENT SET DF5A AND UP



### TILT RAM BLOCK

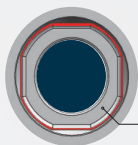
For supporting the engine when trailering your boat package.



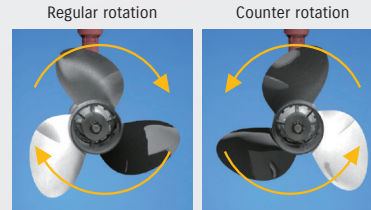
# GENUINE ACCESSORIES

## WATERGRIP PROPELLER

WATERGRIP is a stainless-steel propeller series offering accurate response to your operation. With efficient conversion of engine power into propulsion, this propeller series meets our customers' demand for bigger, faster, more powerful outboards. The WATERGRIP propeller series employs a new interchangeable and square shaped propeller bush that minimizes power loss in delivery.



Better resistance over propeller slip interchangeable bush.



## COUNTER SELECT CONNECTOR

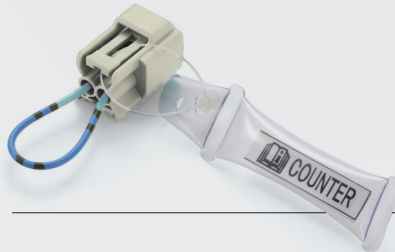
DF300AP/250AP -  
DF200AP/175AP/150AP

Converts the outboard to counter rotation specification. This industry first is made possible through a special, unified design of gears, shaft, and bearings in the lower unit.

### ADVANTAGE

- Eliminates the need to purchase a dedicated counter rotation outboard.

\*Make sure you consult with your Suzuki authorized dealer before changing Regular Rotation to Counter Rotation (or vice versa). Counter rotational propeller will also be needed along with the Counter Select Connector.



## MAINTENANCE KITS

We are now offering complete maintenance kits on a range of Suzuki outboards. Each kit has the complete range of Suzuki Genuine Parts required for servicing Suzuki outboards according to the periodical maintenance schedule as detailed in the owner's manual.

\*Kit contents depend on outboard model.

\*DF300/DF325/DF350 kit shown. Parts included in this kit are required to be fitted by an authorised Suzuki outboard dealer.



SPLASH COVERS  
DF2.5 AND UP



## OUTBOARD TOUCH UP PAINT

Two colours available, 'OEP' Shadow Black for earlier generation outboards and 'YAY' Pearl Nebular Black for later models (2017+).

## MULTI-FUNCTION TILLER HANDLE

DF115A/100A - DF100B/90A/80A/70A  
- DF60AV/50AV - DF60A/50A/40A

Troll mode switch activates SUZUKI Troll Mode System and controls RPM from idling engine speed up to 1200rpm at every 50rpm.



Tachometer with warning indicators.

Power trim & tilt switch and throttle grip friction adjuster.

Three-position angle adjustable bracket.



THE  
**ULTIMATE**  
OUTBOARD MOTOR

As the world's ULTIMATE OUTBOARD MOTOR brand, Suzuki always remains focused on providing the ultimate marine experience, which requires a healthy and clean marine environment. Since 2011, we have been voluntarily conducting the "Clean-up the World Campaign" every year to contribute to a better marine environment and more than 8,000 people have participated. In Japan, the campaign has been officially recognised by the Ministry of the Environment in the "Plastic Smart Campaign".

To continue to make our utmost effort for environmental protection, it is now time for us to review how we have been contributing to the environment and society and newly determine our direction. As well as continuing our worldwide clean-up campaign, we have committed to take responsible actions against plastic waste problems. We have developed the Suzuki Clean Ocean Project, to demonstrate our commitment.

#### OUR COMMITMENT

- Continue our actions to clean the marine environment all over the world
- Reduce plastic used in the packaging of our products
- Reduce marine micro-plastic waste

We believe the actions Team Suzuki takes around the world will be one positive step forward to a cleaner marine environment.

[SUZUKIMARINE.CO.NZ](http://SUZUKIMARINE.CO.NZ)

