

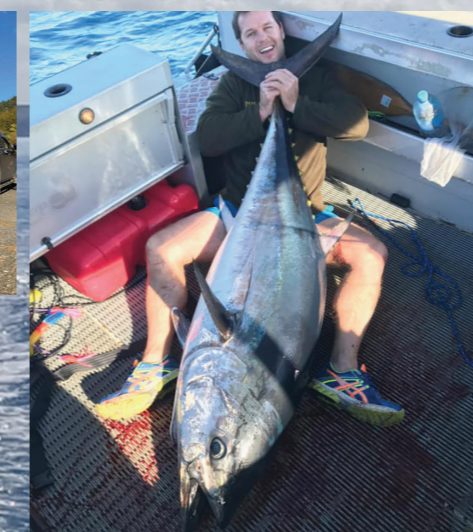
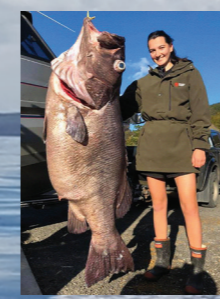


THE  
**ULTIMATE**  
OUTBOARD MOTOR



200 - 350HP FOUR STROKE V6

# OUR PEOPLE OUR PASSION.



Based in Whanganui, Suzuki New Zealand has a small but dedicated team of enthusiastic staff who are passionate about the outdoor lifestyle NZ has on offer. Whether this activity is fishing, water sports or just recreational boating it's a sure bet that most weekends you'll find us out on the water or in it. We're proud of the fact that we don't just sell outboard motors, we own them, use them and because of this we better understand what Kiwis expect from our range of ultimate outboard motors. We promise you a 100% commitment to maximising your on water enjoyment as a first priority, we know the standards you expect and will go that extra nautical mile to meet them.

# COMPACT AND HIGH PERFORMANCE ENGINES THAT DELIVER THE ULTIMATE POWER AND PERFORMANCE.

V6 DF200TX / DF225TX / DF250TX

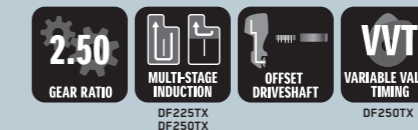


## SPECIFICATIONS

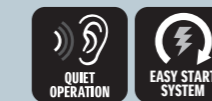
### DURABILITY & RELIABILITY



### PERFORMANCE



### EASE & COMFORT



	250TX	225TX	200TX
RECOMMENDED TRANSOM HEIGHT MM	X: 635	X: 635	X: 635
RECOMMENDED TRANSOM HEIGHT INCH	X: 25	X: 25	X: 25
WEIGHT KG*	X: 275	X: 275	X: 275
CYLINDERS	V6 (55°)		
ENGINE TYPE	DOHC 24-VALVE		
FUEL DELIVERY SYSTEM	ELECTRONIC FUEL INJECTION		
PISTON DISPLACEMENT CM <sup>3</sup>	3,614		
MAXIMUM OUTPUT KW	184	165	147
FULL THROTTLE OPERATING RANGE RPM	5,500 - 6,100	5,500 - 6,100	5,500 - 6,100
CONTROLS	REMOTE (MECHANICAL)		

\* Dry weight, not including propeller and engine oil.

**CLASS LEADER**  
Compact 3.6L 55 degree V6 engine with double overhead camshaft and four valves per cylinder head all driven by super reliable (and not to mention quiet) cam chains.



**ANTI-CORROSION**  
Suzuki's formulated Suzuki Anti-Corrosion Finish starts with a special finish that offers maximum bonding of the finish to the Suzuki Aluminium Alloy. This finish can be found on all Suzuki line-up models.

**OFFSET DRIVE SHAFT**  
Unique to Suzuki Marine is our off-set drive shaft which assists with improving fuel economy, better weight distribution, and 2.50 gear ratio.

# AWARD-WINNING, OUTBOARDS. POWER & PERFORMANCE WHEN YOU NEED IT.

V6 DF250AP / DF300AP

## TAKING YOUR BOATING EXPERIENCE TO A NEW LEVEL FOR YOUR ULTIMATE MARINE LIFE.

Drive By Wire (Suzuki Precision Control: S.P.C) is a technologically advanced computer-based control system with electronic wiring that eliminates the source of friction and resistance. While you enjoy smooth throttle and shift operation, the system's computer is processing and transmitting commands in real-time to actuators at the engine that deliver precise throttle controls with smoother, decisive shifting.

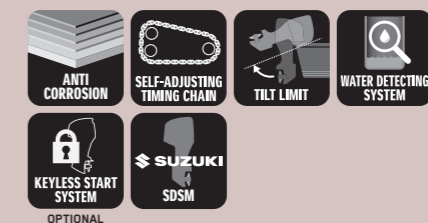


## INCREASED ALTERNATOR OUTPUT AT LOW SPEED.

Ideal for today's power-hungry fishing boats that spend a lot of time trolling.

## SPECIFICATIONS

### DURABILITY & RELIABILITY



### PERFORMANCE



### ECONOMY



### EASE & COMFORT



	300AP	250AP
RECOMMENDED TRANSOM HEIGHT MM	X: 635 XX: 762	X: 635 XX: 762
RECOMMENDED TRANSOM HEIGHT INCH	X: 25 XX: 30	X: 25 XX: 30
WEIGHT KG*	X: 290 XX: 299	X: 290 XX: 299
CYLINDERS	V6 (55°)	
ENGINE TYPE	DOHC 24-VALVE	
FUEL DELIVERY SYSTEM	ELECTRONIC FUEL INJECTION	
PISTON DISPLACEMENT CM <sup>3</sup>	4,028	
MAXIMUM OUTPUT KW	220.7	184
FULL THROTTLE OPERATING RANGE RPM	5,700-6,300	5,500-6,100
CONTROLS	DRIVE BY WIRE	

\* Dry weight, not including propeller and engine oil.

### COMPACT V6

High performance 4L 55 degree V6 double overhead camshaft with 4 valves per cylinder head all driven by super reliable (and not to mention quiet) cam chains.



### SELECTIVE ROTATION

Changing the rotation of a Suzuki DF250AP or 300AP is simple with our special switch which alters the rotation of the propeller from standard rotation to counter rotation. This is an industry first and makes setting up dual-engine rigs low cost and simple.

### OFFSET DRIVE SHAFT

Unique to Suzuki Marine is our off-set drive shaft which assists with improving fuel economy, better weight distribution, and 2.08 gear ratio.

# A NEW REVOLUTION IN INNOVATION.

## DUAL PROP V6 DF325A FLAGSHIP SERIES



### OUR MOST POWERFUL ENGINE

High performance compact 4.4L 55 degree V6 engine with double overhead camshaft and four valves per cylinder head all driven by super reliable (and not to mention quiet) cam chains.

### ECONOMICAL

Suzuki offers next level fuel savings with lean burn technology combined with twin fuel injectors for each cylinder, the savings continue when you combine this engineering with our offset driveshaft and dual propeller drive.

### DUAL PROPELLER SYSTEM

Turn horsepower and torque into drive with twice the grip of a single propeller system. This is true performance that only a Suzuki outboard owner can experience and tell their mates about.



### ANTI-CORROSION

Suzuki's formulated Suzuki Anti-Corrosion Finish starts with a special finish that offers maximum bonding of the finish to the Suzuki Aluminum Alloy. This finish can be found on all Suzuki line-up models.

# NO LIMITS.

V6 DF300 / DF350 INTEGRATED STEERING



### SUZUKI DUAL LOUVER SYSTEM

The DF350/DF300 is equipped with dual louver at the air intake to remove water from the air taken into the cowl. Incorporating a direct intake system makes the highest compression ratio of 12.0:1(DF350),10.5:1(DF300) possible, ultimately leading to a higher engine output.



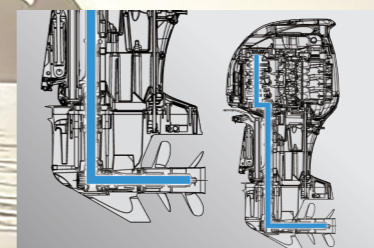
### SUZUKI DUAL PROP SYSTEM

The dual prop system efficiently turns DF350/DF300B horsepower output into propulsion under water. As an added benefit, because each propeller rotates in a different direction, exceptional stability is achieved. In addition, the contra-rotating propellers produce a strong reverse thrust.



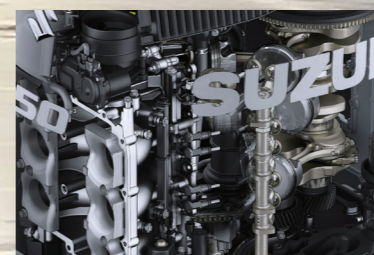
### OFFSET DRIVE SHAFT

Unique to Suzuki Marine is our off-set drive shaft which assists with improving fuel economy, better weight distribution and 2.29 gear ratio.



### DUAL INJECTOR

Dual injectors deliver just the right amount of fuel at just the right time into the cylinder. This dual injector contributes to higher output and better fuel efficiency.



## INTEGRATED STEERING SPECIFICATIONS

### DURABILITY & RELIABILITY



### PERFORMANCE



### EASE & COMFORT



### ECOLOGY & ECONOMY



	350A	300B
RECOMMENDED TRANSOM HEIGHT MM	X: 635 XX: 762	X: 635 XX: 762
RECOMMENDED TRANSOM HEIGHT INCH	X: 25 XX: 30	X: 25 XX: 30
WEIGHT KG*	X: 352 XX: 360	X: 352 XX: 360
CYLINDERS	V6 (55°)	
ENGINE TYPE	DOHC 24-Valve	
FUEL DELIVERY SYSTEM	Electronic Fuel Injection	
PISTON DISPLACEMENT CM <sup>3</sup>	4,390	
MAXIMUM OUTPUT KW	257.4	220.7
FULL THROTTLE OPERATING RANGE RPM	5,700-6,300	5,300-6,300
CONTROLS	Remote (DBW)	

\*Dry weight: not including propeller and engine oil.



## DURABILITY &amp; RELIABILITY



## SUZUKI DUAL LOUVER SYSTEM

The DF350A/DF325A/DF300B is equipped with a dog-leg shaped dual louver at the air intake to completely remove water from the air taken into the cowl.

## ADVANTAGE:

- Prevents water from entering the outboard.
- Allows a direct intake system, contributing to higher engine output.



## SELF-ADJUSTING TIMING CHAIN

The timing chain runs in an oil-bath so it never needs lubricating, and is equipped with an automatic hydraulic tensioner so it remains properly adjusted at all times.

## ADVANTAGE:

- More durability compared to belt types of same class.
- Maintenance-free engine output.



## WATER DETECTING SYSTEM

It helps to protect the engine from water in the fuel using a water detecting fuel filter to alert the driver with both visual and audio warnings when water is present in the fuel.

## ADVANTAGE:

- Prevents water in fuel, which can be the cause of issues like poor combustion, lower power output and corrosion.



## KEYLESS START SYSTEM

This system allows you to start the engine by having the key-fob nearby.

## NOT INCLUDING

DF250TX /225TX /200TX



## TILT LIMIT SYSTEM

Tilt Limit System prevents the outboard from tilting beyond a selected angle.

ALL MODELS

## ADVANTAGE:

- Prevents damage to the boat or outboard due to excessive outboard tilting.



## SDSM

Available for free\*, this service enables you to scan the QR code containing the engine information displayed on the Multi-Function Display or Multi-Function Gauge with your smart phone and send the information via email.

ALL MODELS

## ADVANTAGE:

- The SDSM App lets you send your authorised Suzuki dealer all the technical information they need to service and maintain your outboard motor instantly and easily.

\* Suzuki Multi-function Gauge or Suzuki Multi-function Display and a smartphone running Android or iOS is required.

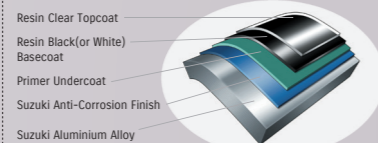


## SUZUKI ANTI-CORROSION FINISH

Special protection is applied to the aluminium surface using high strength bonding to protect the aluminium made exterior parts.

## ADVANTAGE:

- Protection against corrosion helps increase the overall outboard durability.



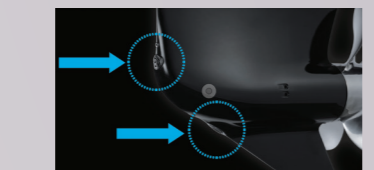
## DUAL WATER INLET

The engine's cooling system relies on water supplied through two water inlets located on the lower unit where usually there is only one.

DF350A /325A/300B /DF300AP /250AP

## ADVANTAGE:

- Increases the water flow, providing better cooling performance.



## PERFORMANCE



## SUZUKI DUAL PROP SYSTEM

The Suzuki Dual Prop System spins two propellers rotating in opposite directions on a single engine.

## ADVANTAGE:

- Achieve superior stability when driving straight by eliminating the lateral forces associated with a single propeller.
- Engine power is transferred to the water more efficiently.
- Powerful reverse thrust and braking force.
- Less water resistance due to the small size of the gear case.
- Good water gripping performance and quick startup acceleration.



## 2-STAGE GEAR REDUCTION

This system which incorporates the Offset Driveshaft features a first stage reduction between the crankshaft and drive shaft, and a second stage reduction inside the gear case. This design makes a larger gear ratio possible, allowing it to turn a large diameter propeller.

ALL MODELS

## ADVANTAGE:

- Increased power to turn large diameter propellers, offering quick acceleration.
- High propulsive efficiency with large diameter propeller.
- Powerful navigation, maintaining propeller rotation even with a larger load.

MODEL	DF250TX /225TX /200TX	DF300AP /250AP	DF350A /325A /300B
GEAR RATIO	2.29:1	2.08:1	2.29:1



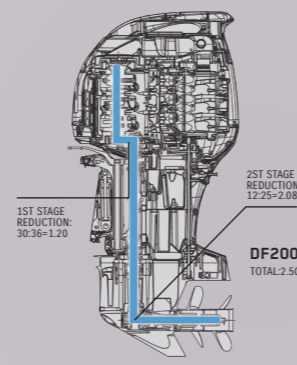
## OFFSET DRIVESHAFT

The engine powerhead is positioned closer to the front, moving the outboard's centre of gravity forward.

ALL MODELS

## ADVANTAGE:

- Less vibration
- More compact
- Stable steering performance



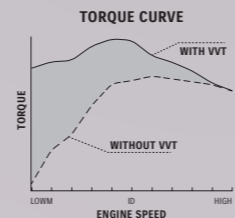
## VVT (Variable Valve Timing)

The Variable Valve Timing is used to control the opening and closing timing of the intake valve depending on the engine operation.

DF350A /325A/300B /DF300AP /250AP /DF250

## ADVANTAGE:

- Offers smooth, powerful torque.
- Provides increased acceleration during operation for all speed ranges.



## DIRECT AIR INTAKE

Designing a direct airflow path from the intake port to the cylinder suppresses any increase in the intake temperature and improves combustion efficiency.

## ADVANTAGE:

- Delivers higher power output from a small displacement with improved combustion efficiency.



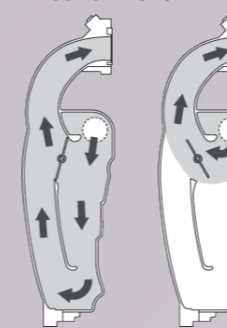
## MULTI-STAGE INDUCTION

Manifold pipes are switched between short and long during low speed and high speed operation to ensure the right volume of air enters the engine.

## ADVANTAGE:

- Increases output during high speed operation with greater volume of air input.
- Increases combustion efficiency and maximises torque by increasing the density of the air intake during low speed operation.

## AIR FLOW MULTI-STAGE INDUCTION MODULE



LOWER RPM HIGH RPM

## EASE &amp; COMFORT



## SUZUKI PRECISION CONTROL (Electronic Throttle and Shift Systems)

Operation from the remote control is delivered to the outboard via an electric signal and not by the traditional mechanical control cables.

## ADVANTAGE:

- Less friction and resistance compared to the mechanical type that uses actual control cables.
- Combined with the Lean Burn Control System, it offers improved fuel economy for a wide range of speed.
- Contributes to quick and reliable operation.



FLUSH MOUNT R/C BOX FOR SINGLE ENGINE

BINNACLE MOUNT R/C BOX FOR SINGLE ENGINE

BINNACLE MOUNT R/C BOX FOR DUAL/TRIPLE/QUAD ENGINE



## SUZUKI EASY START SYSTEM

Simply turn the key and release, and the starter stays engaged until the engine starts. This system offers a smoother start of the engine.

NOT INCLUDING DF250TX



## QUIET OPERATION

Intake noise is suppressed with a resonator, which makes the noise from the outboard quieter.

DF350A /325A/300B

## ADVANTAGE:

- Less noise, making boating more enjoyable.



## SUZUKI SELECTIVE ROTATION

Function for selecting regular or counter rotation on one outboard with an optional connector and a counter rotation propeller.

## ADVANTAGE:

- Either regular or counter rotation can be used on the same outboard.



## SUZUKI TROLL MODE SYSTEM\*

This system helps the boat running at a certain speed range in low revs.

NOT INCLUDING DF250/225TX/200TX

## ADVANTAGE:

- Boat can keep running at a certain speed range in low revs without having to operate the throttle on the boat.
- Gives you highly precise control at low revs. \*Available with SMD, SMG, or Troll Mode Switch Panel.



## AUTOMATIC TRIM

Automatically adjusts the tilt of the outboard motor to the appropriate angle while driving.

NOT INCLUDING DF250TX/DF225TX/DF200TX

## ADVANTAGE:

- More comfortable boating and better fuel economy, regardless of user skill.

## ECOLOGY &amp; ECONOMY



## LEAN BURN CONTROL SYSTEM

The Lean Burn Control System supplies the appropriate amount of fuel and air mixture depending on the navigation conditions.

DF250TX /225TX /200TX

## ADVANTAGE:

- Significant improvement in fuel economy in all speed ranges especially at cruising speed.
- Fuel is saved and gasoline costs are cut thanks to improved fuel economy.

## LEAN BURN



## DUAL INJECTOR

The dual injector delivers just the right amount of fuel at the right time into each cylinder.

DF350A /325A/300B

## ADVANTAGE:

- Contributes to higher output and better fuel efficiency.



## SUZUKI CLEAN OCEAN PROJECT

Suzuki Clean Ocean Project was created to demonstrate Suzuki's commitment towards reducing marine plastic waste.

**GENUINE PARTS**

ECSTAR IS A GLOBAL BRAND NAME OF SUZUKI GENUINE OIL & CHEMICALS

**ECSTAR**  
GENUINE OIL & CHEMICAL



V7000 10W-40 SEMI SYNTHETIC

**THE ULTIMATE FORMULATION**

Suzuki Approved Genuine Engine Oils have all been rigorously tested and certified by Suzuki engineers. So you can be confident that they'll help keep your Suzuki outboard in perfect condition, giving you maximum performance and reliability over its lifetime.

**REPLACEMENT GUIDELINE**

(ENGINE OIL)

INTERVAL	20 HOURS OR 1 MONTH*
	100 HOURS OR 1 YEAR*

\*which ever comes first

This guideline may vary by outboard motor model, condition of use, region, etc. Please refer to the owner's manual or ask an authorised Suzuki dealer for more information.

Availability may differ in some regions. Please contact your Suzuki local dealer.

**MECHANICAL CONTROLS**

For reliable, relaxing boating, you need controls you can count on, whatever the conditions. So, through clever engineering and design, we've made our Flush-Mount and Side-Mount Remote Control Boxes as simple and robust as possible. That way, you can be confident you've got all the functions and control you need, and that they'll keep working flawlessly for years to come.



**CONCEALED SIDE MOUNT CONTROL**

- Flush mount maximises personal space
- Smooth operation



BINNACL MOUNT R/C BOX FOR DUAL/TRIPLE/QUAD ENGINE



FLUSH MOUNT R/C BOX FOR SINGLE ENGINE



BINNACL MOUNT R/C BOX FOR SINGLE ENGINE

**SUZUKI PRECISION CONTROL**

FOR DRIVE-BY-WIRE SYSTEM

150AP/175AP/DF200AP/250AP  
300AP/300B/325A/350A

Our sophisticated drive-by-wire system eliminates the friction and resistance. This gives smooth, precise control with crisp, immediate shifting, particularly at low revs and when manoeuvring. The system can be configured with single, twin, triple, or quad installations, and for dual stations. Suzuki Precision Control also features built-in systems that help guard the engine and drive against damage, so you can further experience the better boating life.

**FEATURES**

- Suzuki Precision Control offers smooth and positive gear operation.
- Smooth power transitions when power is required.
- Combined with Suzuki's Lean Burn Control system, it delivers remarkable fuel economy over a wide operating range.



**WATERGRIP PROPELLER**

WATERGRIP is a stainless-steel propeller series offering accurate response to your operation. With efficient conversion of engine power into propulsion, this propeller series meets our customers' demand for bigger, faster, more powerful outboards.

The WATERGRIP propeller series employs a new interchangeable and square shaped propeller bush that minimises power loss in delivery.



**WATERGRIP**

Better resistance over propeller slip interchangeable bush.



DAY MODE



NIGHT MODE

**SMG4**

**SUZUKI MULTI-FUNCTION GAUGE ALL MODELS**

Offering a genuine colour display, Suzuki's Multi-Function Gauge provides all the performance information you need in one easy to read gauge.

Individual elements can also be emphasised to further enhance user friendliness, functionality, and reliability.

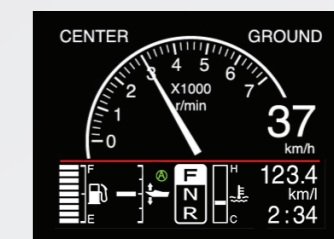
**SPECIFICATIONS**

- 3.5 Colour Display
- Size: 105mm(W)x105mm(H)x16mm(D)
- Easy installation and setup
- NMEA2000 output
- Applicable models: DF9.9B - DF350A

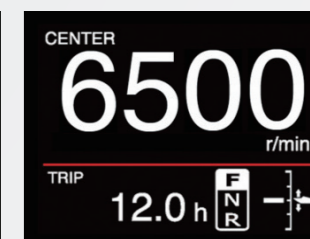
**FEATURES**

- Can be operated with both digital and analog readout
- Incorporates day and night modes
- Displays the QR code for the Suzuki Diagnostic System.

**ANALOG TACHO & SPEED MODE**



**DIGITAL TACHO MODE**







**THE  
ULTIMATE  
OUTBOARD MOTOR**

As the world's ULTIMATE OUTBOARD MOTOR brand, Suzuki always remains focused on providing the ultimate marine experience, which requires a healthy and clean marine environment. Since 2011, we have been voluntarily conducting the "Clean-up the World Campaign" every year to contribute to a better marine environment and more than 8,000 people have participated. In Japan, the campaign has been officially recognised by the Ministry of the Environment in the "Plastic Smart Campaign".

To continue to make our utmost effort for environmental protection, it is now time for us to review how we have been contributing to the environment and society and newly determine our direction. As well as continuing our worldwide clean-up campaign, we have committed to take responsible actions against plastic waste problems. We have developed the Suzuki Clean Ocean Project, to demonstrate our commitment.

#### **OUR COMMITMENT**

- Continue our actions to clean the marine environment all over the world
- Reduce plastic used in the packaging of our products
- Reduce marine micro-plastic waste

We believe the actions Team Suzuki takes around the world will be one positive step forward to a cleaner marine environment.

**MARINE.SUZUKI.CO.NZ**

