

AIR CLEANER FILTER

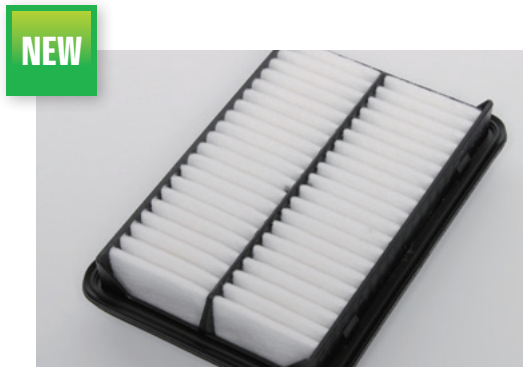
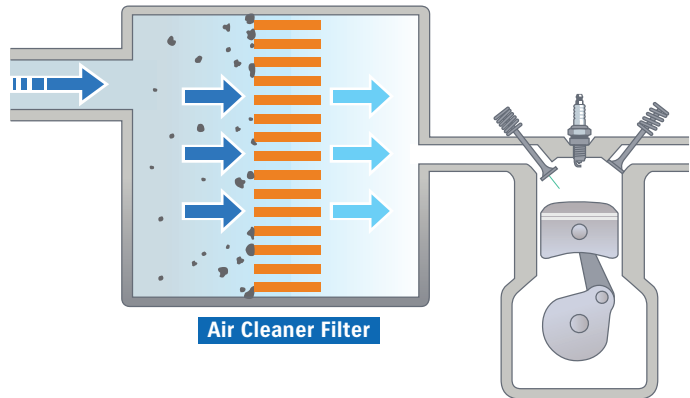


Inspection guideline (Replace if necessary)

	Interval	
Severe driving condition	2,500 km	*whichever comes first
Normal driving condition	15,000 km	

Purpose and Function

The air cleaner filter removes dust and other contaminant particles from the air that is sucked into the engine.



If overused without replacement ...

- Decrease in engine power
- Decrease in fuel economy
- Engine parts wear

An excessively contaminated air cleaner filter reduces the air flow to the engine cylinder. This may cause the engine malfunction, such as incomplete combustion and an increase in fuel consumption.